



Department
of Industry
Resources Regulator

Mine Safety



Managing screens and screen maintenance in extractives

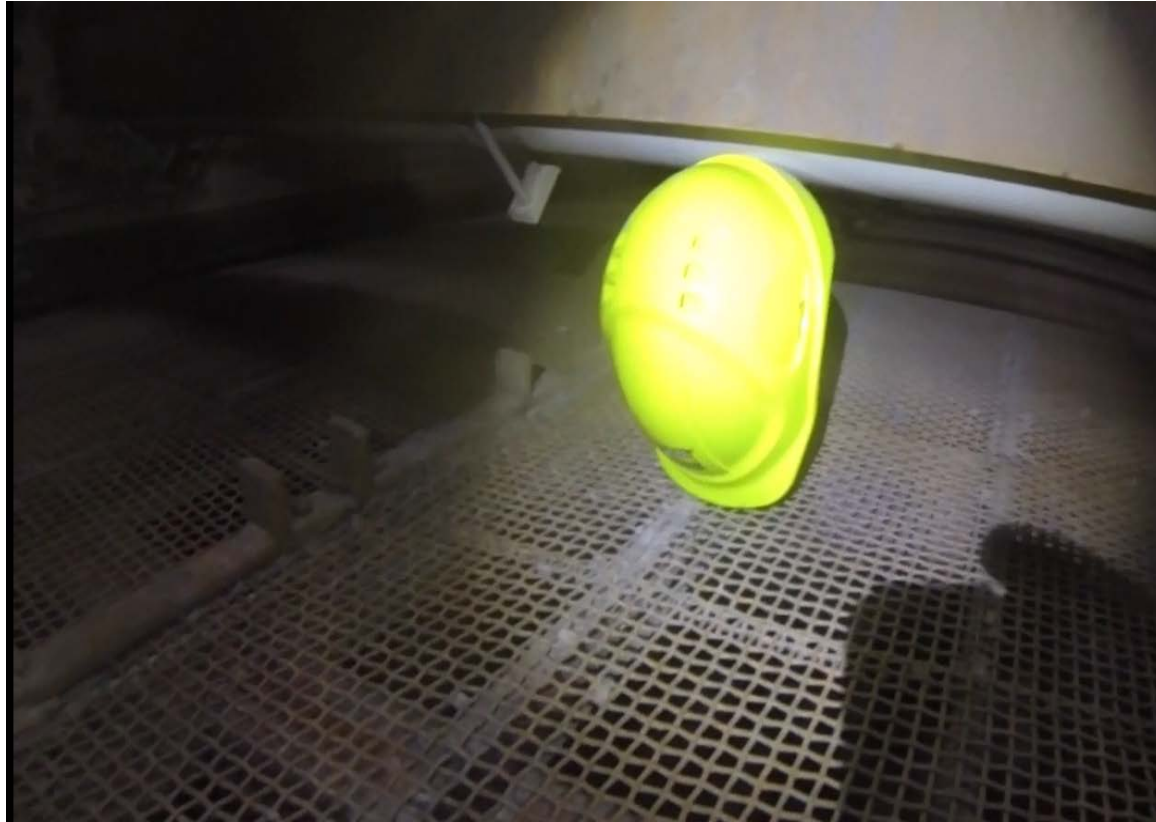
Kylie Newtown

Practice Leader Health and Human Factors
Mine Safety, NSW Resources Regulator

Why screens?



Screens- the hard hat test

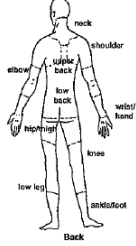


Screens- awkward positions



Analysis

experienced.

Exertion - How much force is the person using? - think about starting or stopping quickly					Body part 
1 No effort	2	3 Moderate force & speed	4	5 Maximum force or speed	
Awkward posture - How awkward is the person's posture?					
1 All postures neutral	2	3 Moderately uncomfortable	4	5 Very uncomfortable	
Vibration- How much are the whole body or hand(s) being vibrated?					
1 None	2	3 Moderate	4	5 Extreme	
Duration - How long is the action performed for?					
1 < 10 minutes	2 10-30 min	3 30 min - 1 hr	4 1 - 2 hrs	5 > 2 hrs	
Repetition- How often are similar actions done?					
1 No repetition	2	3 cycle time < 30 s	4	5 cycle time < 10 s	

Name of task: Screen Change

Why was this task selected: Difficult M/H task

Location where task occurs: Screens

Who performs the task: Maintenance Crew

General description: Remove and Replace worn Screen Cloths

Postures: Bending, Pushing/Pulling, Lying Down, Twisting

Forceful/muscular exertions: Lifting, Pushing/Pulling, Grip

Risk controls

Design control options:

(eliminate, substitute, engineer) GET RID OF TRIPLE DECK SCREENS AND REPLACE WITH 3 SEPERATE SINGLE DECKS. WITH SIDE ACCESS GATES AT WORK LEVEL. THIS WILL ALLOW YOU TO STEP ONTO THE SCREEN ELIMINATING CLIMBING, DRAGGING IN AND OUT OF SCREENS,

Horse
Shoe

Administrative control options:

Purpose

Our guideline provides guidance on the design, operation and maintenance of screen in quarry operations.



Risks of screens, including maintenance

- Hazardous manual tasks and hand-arm vibration
- Confined spaces
- Hot work
- Working at heights
- Airborne contaminants (dust and fumes)

Risk management

- Legislative obligation
- Critical controls
- Risk assessment including bow ties and specific HMT risk assessments
- Hierarchy of controls

Screen hazards and recommended controls

- Height between decks: consider greater height between decks
- Screen media: choose lighter screen media
- Walkways: should be rated to carry the load and wide enough for workers including, tools, screens and other equipment
- Access: how do you access your top screen?
- Screen storage and moving screens: do you need lifting equipment?
- Hot work: should not be undertaken in a confined area of the screen deck

Exercise

- Refer to: your handout checklist
- Time: five-minute table discussion
- Question: working through the checklist, discuss what hierarchy of controls you have implemented on your site

Summary

- Consider how screens are maintained on your site
- Can you influence change with regard to the design of screens?
- Have you implemented lighter screen media options?
- For more information, refer to the *Guide to screens and screen maintenance*, available at resourcesandenergy.nsw.gov.au/safety

Questions



More information

Kylie Newton

Practice Leader Health and Human Factors

e: kylie.newton@industry.nsw.gov.au

t: 4931 6406